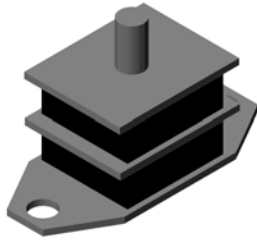


SANDWICH MOUNT RECTANGULAR MOUNTING GR-121 & GR-123

Rectangular mounting also known as sandwich mounting and are widely used for engines in road vehicles & mobile construction plant. Rubber in mountings is bonded between two metal plates with holes at each end for fitting. Some designs incorporate steel interleaves for increased load capacity. The mountings are best used in shear & compression but may be laded directly in shear & compression.

DESIGN FEATURES

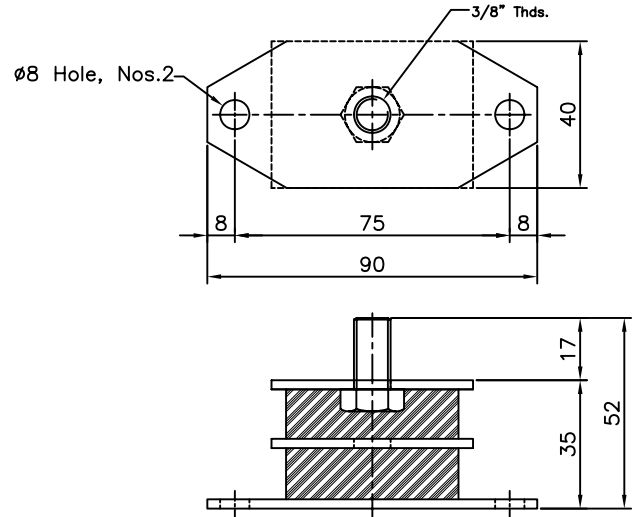
- Mounded in first grade Natural Rubber.
- Steel metals etch & primed on external surfaces.
- Rectangular mounting should not be used in tension or exposed to contamination by mineral oil.



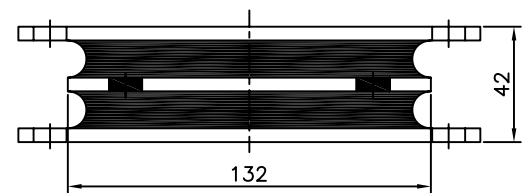
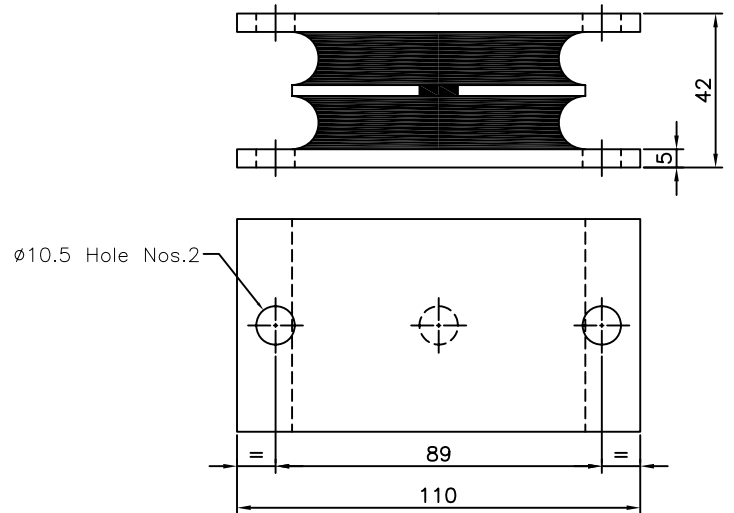
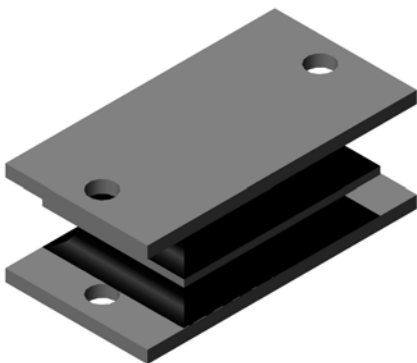
NO.	SIZE	COLOUR CODE	MAX.LOAD CAPACITY (KG.)	DEFLECTION
01	GR 121/1	BLUE	98	2.7
02	GR 121/2	YELLOW	125	2.7
03	GR 121/3	GREEN	145	2.7
04	GR 121/4	BROWN	215	2.7
05	GR 121/5	RED	325	2.7

TYPICAL APPLICATION

- Lift head gear
- Engine mountings for road vehicles
- Mobile construction plant
- Hoppers
- Heavy plants
- Conveyor System



NO.	SIZE	MAX.LOAD CAPACITY (KG.)	(mm) DEFLECTION	COLOUR CODE
01	GR 122/1	130	3	BLUE
02	GR 122/2	220	3	WHITE
03	GR 122/3	370	3	GREEN



NO.	SIZE	MAX.LOAD CAPACITY (KG.)	DEFLECTION (mm)
01	GR 123/1	390	3
02	GR 123/2	600	3
03	GR 123/3	800	2.5
04	GR 123/4	1000	2.2
05	GR 123/5	1800	2

