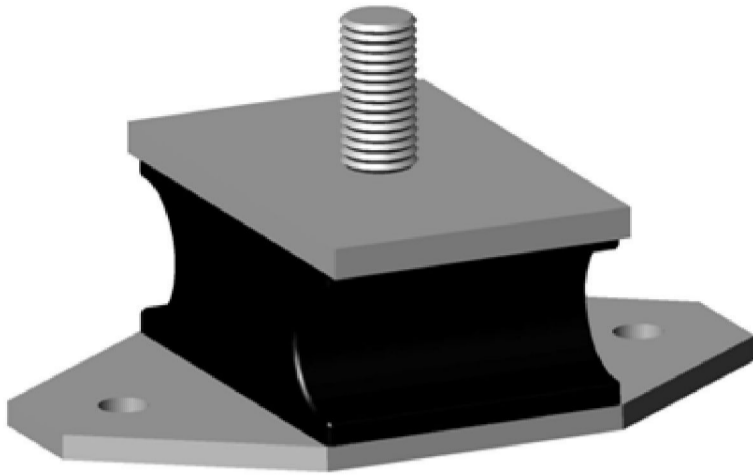
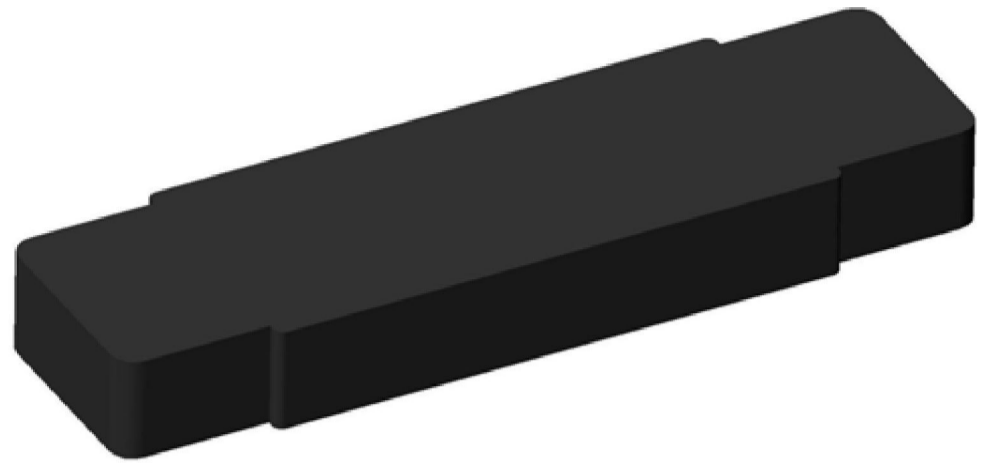


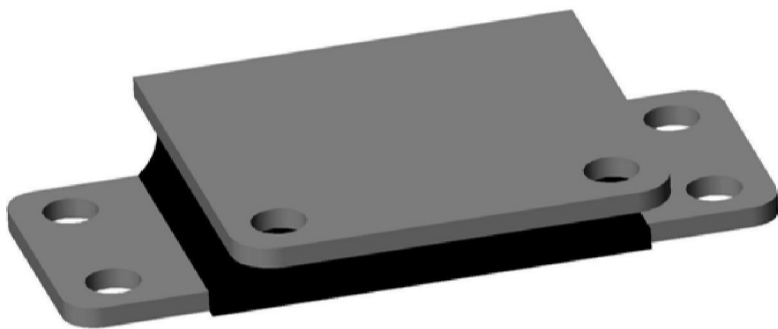
G.R.. BOND This Mounting can be effectively used as a shock absorbers in compression and shear loading. This can be used in variety of application. Engine mounts are designed with metal incorporated in mounting itself to take care of compression, shear and torque loads depending up on the applied load. This mountings are easy to install.



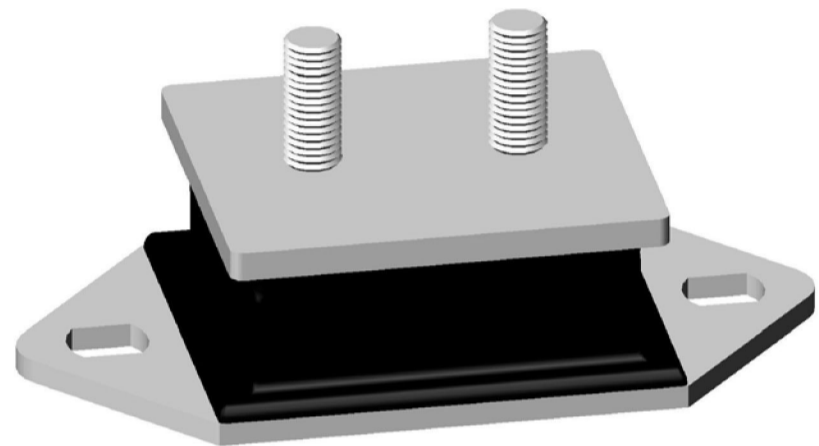
GR - 124



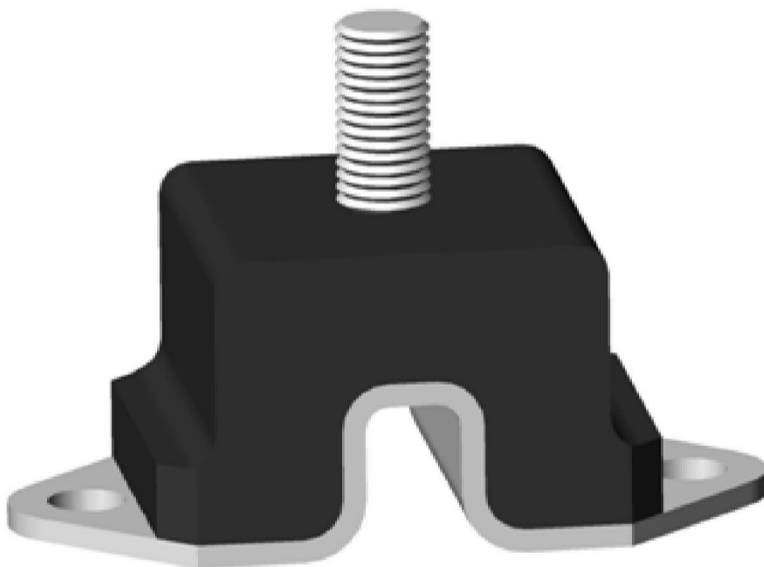
GR - 125



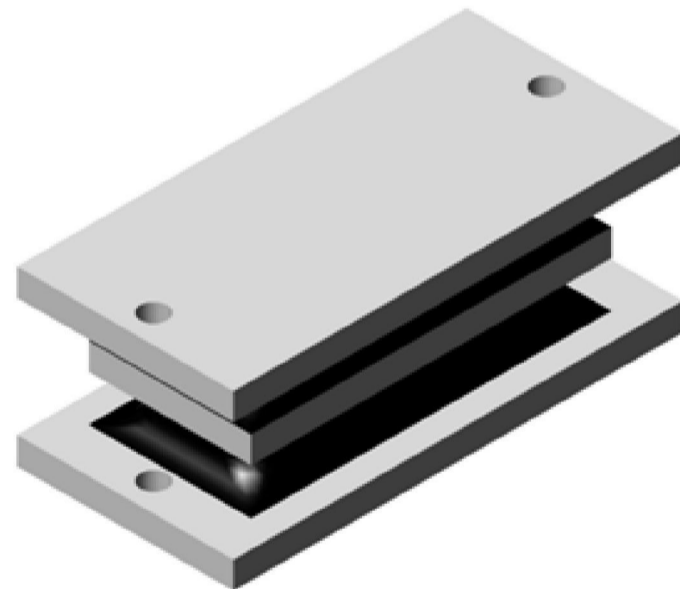
GR - 126



GR - 127



GR - 128



GR - 129

